

Asia Hub and CIAERA Annual Meeting 2024

November 12-15, 2024 | Centara Riverside Hotel, Chiang Mai, Thailand

Background “Multidisciplinary Research Institute”

Multidisciplinary Research Institute (MDRI) Chiang Mai University was established on February 25, 2023, from the combining of Science and Technology Research Institute (STRI) and Social Research Institute (SRI). This was officially announced by the Royal Thai government gazette on the 25th of February 2023 B.E. MDRI is the only institute in CMU which contributes research based on science & technology research and social research and aims to deliver high potential, high social impact research to the community.

Currently, the institution has a proactive research operation plan in the form of a platform, with key missions and important workgroups including:

- (1) Climate Actions and PM2.5
- (2) Novel Food, Health and Beauty
- (3) Novel Tourism and Creative Economy
- (4) Social Engagement
- (5) Hemp & Cannabis for medical purpose

Vision

“Excellence institute in multi & interdisciplinary research and academic services, and also creating the tangible knowledge in international level”

Mission

- 1 Contribute the research & academic services for beneficiary utilization along with high level publication in international level.
- 2 Develop the new generation researcher with multidisciplinary knowledge & abilities.
- 3 Develop high impact research on social, economic and environment context.

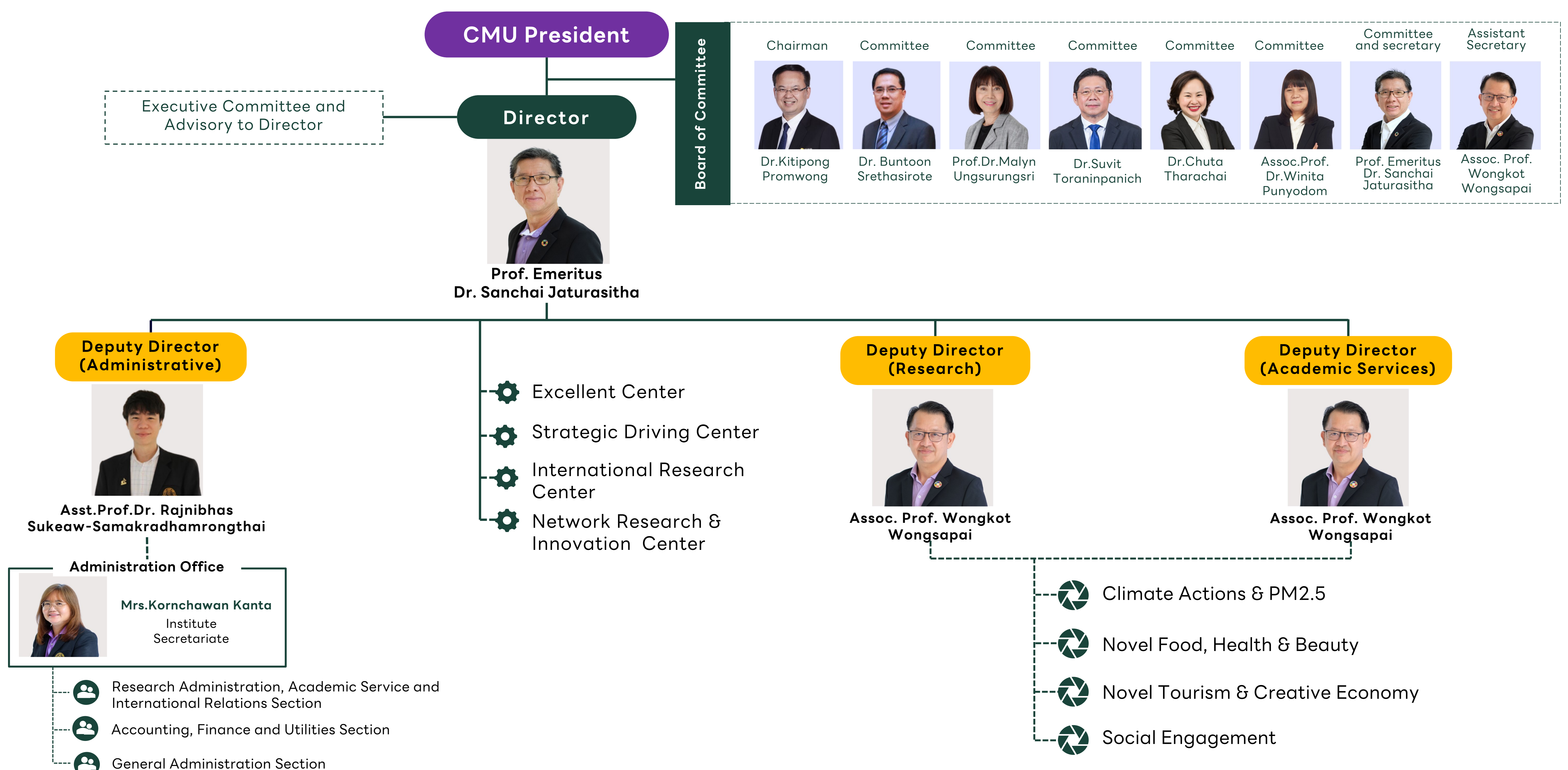
Organization Culture

Creative thinking
Meet research question needs
Service mind
Social value creation

Core Value : MDRI

- M** Morality
- D** Driving for Excellence
- R** Resilience
- I** Integration

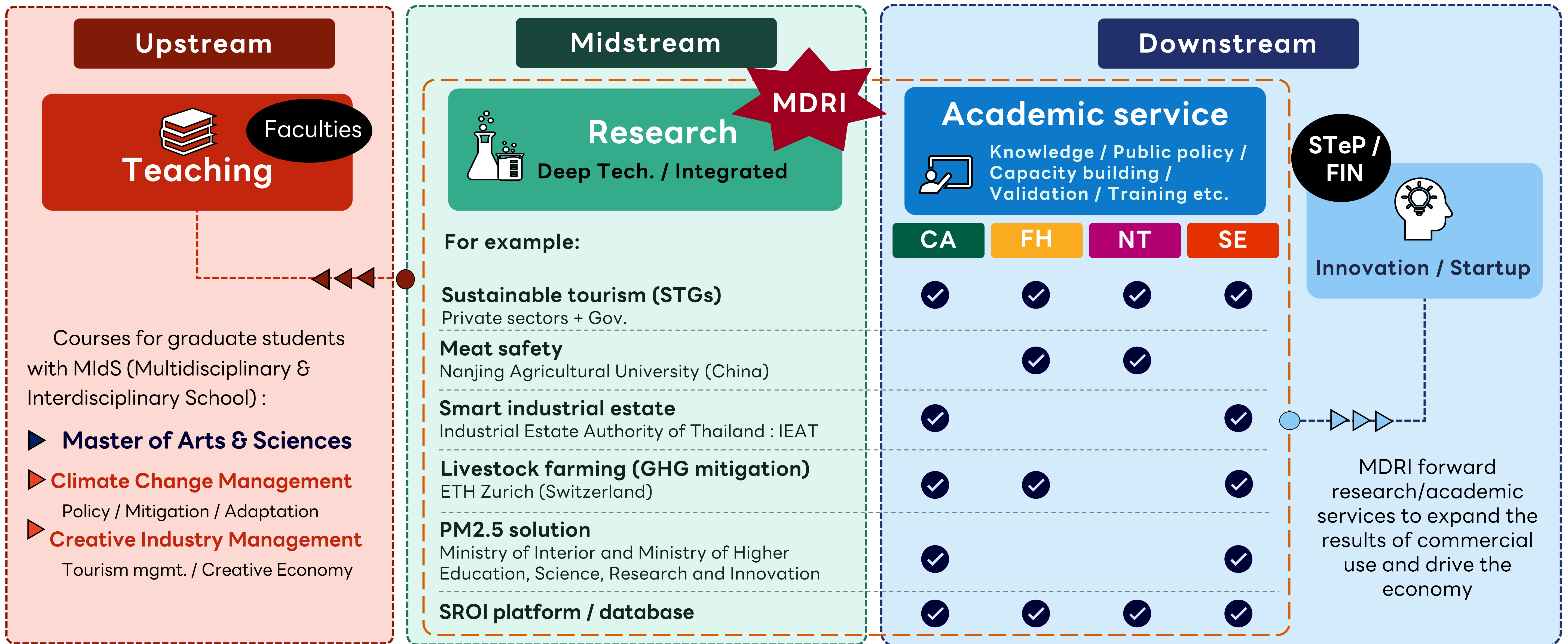
Organizational Structure



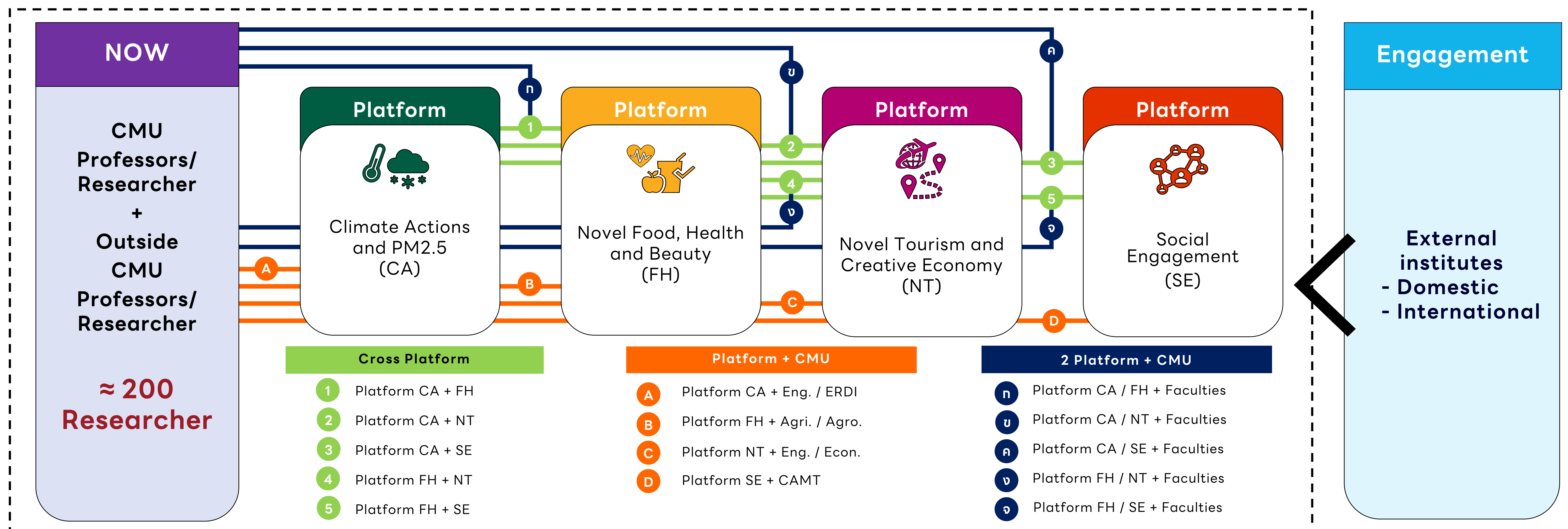
Asia Hub and CIAERA Annual Meeting 2024

November 12-15, 2024 | Centara Riverside Hotel, Chiang Mai, Thailand

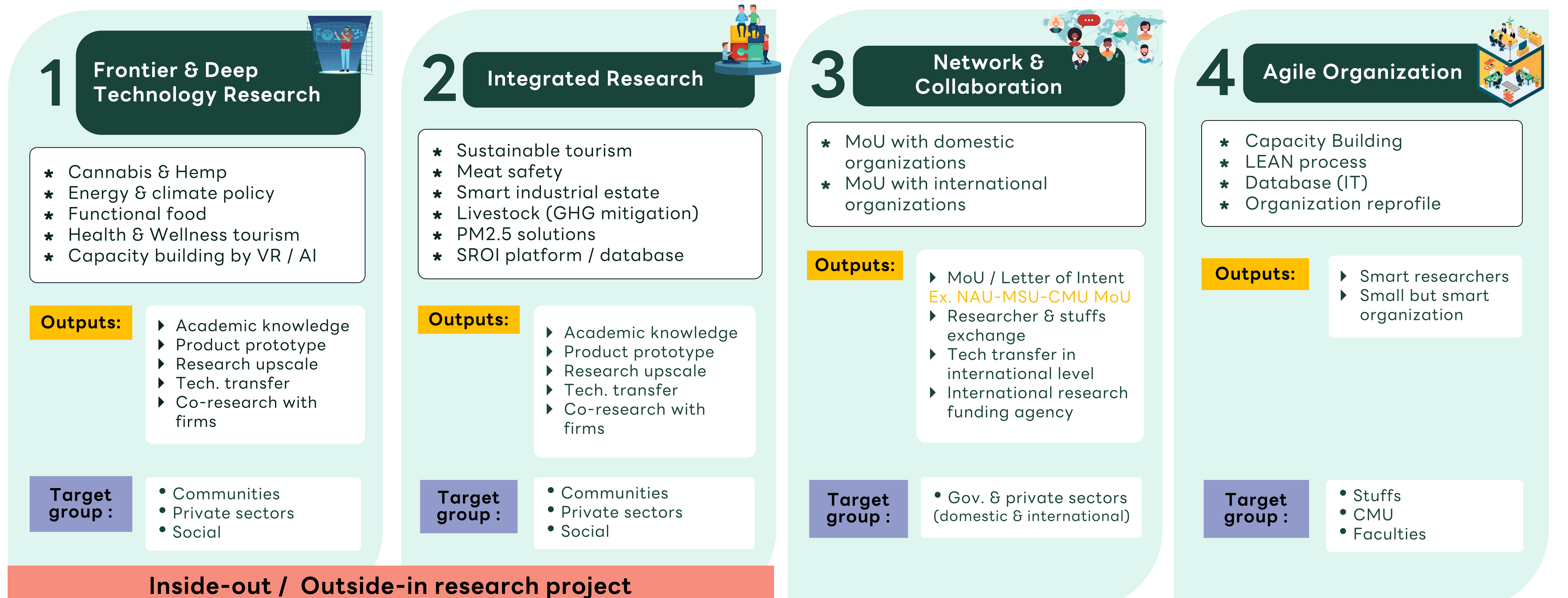
MDRI Value Chain



MDRI Platform



4 Focused Area



Inside-out / Outside-in research project